



Weekly Weather Update

2:30 PM CDT
Thursday, February 11, 2021

Andy Patrick & Seth Warthen, NWS Lake Charles





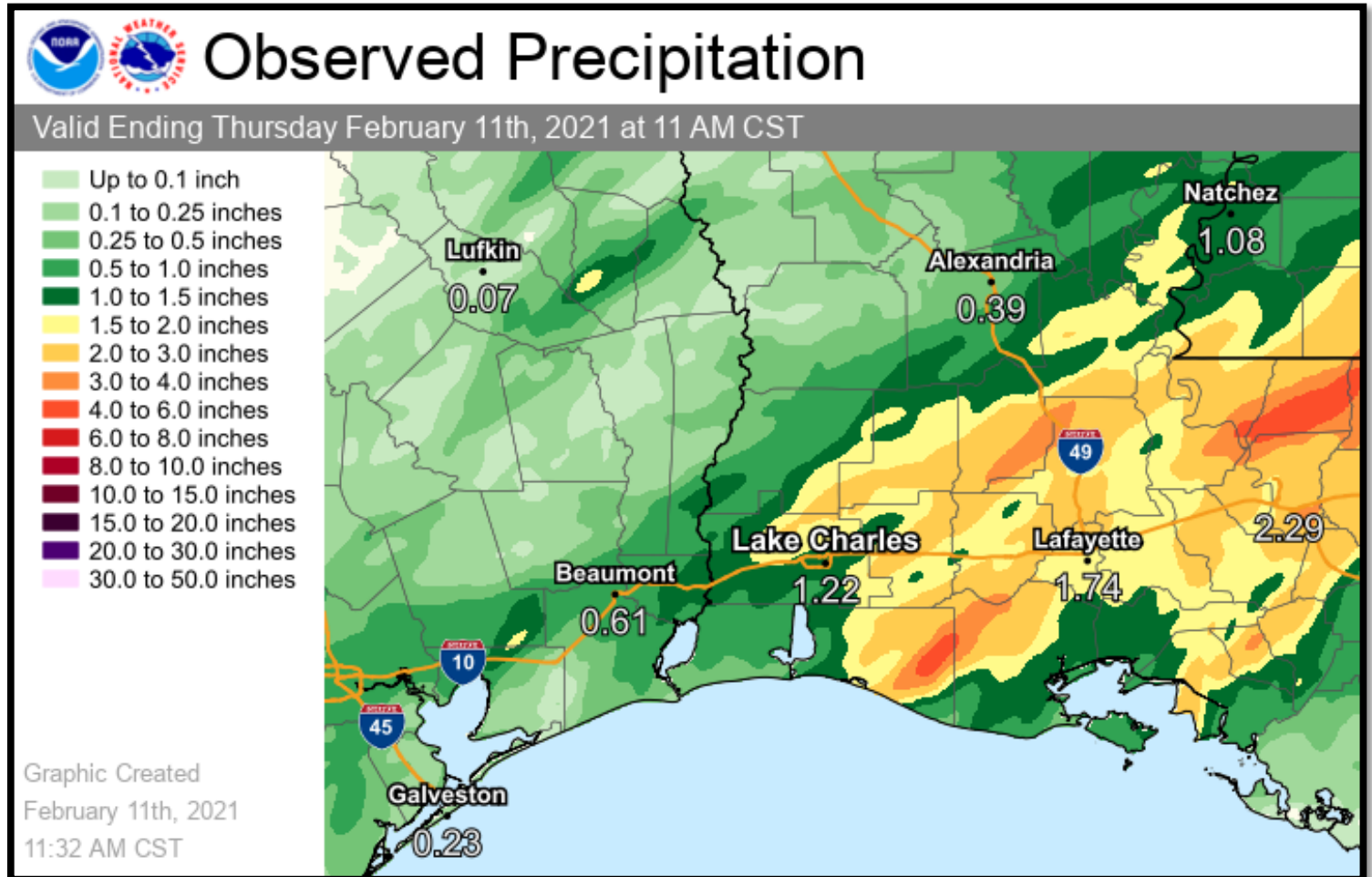
TOP STORY:

- **Cold to very cold air expected late this weekend through mid next week.**
 - **Some freezing or frozen precipitation possible this weekend, but more likely Monday into early Tuesday.**
- **A good deal of uncertainty at this time, but a high impact winter weather event is possible Monday**

	Low Temperatures	High Temperatures	Chance For Rain
Friday	33-43 F	40-49 F	65-80%
Saturday	31-41 F	42-50 F	20-25%
Sunday	26-34 F	38-49 F	10%
Monday	22-35 F	31-44 F	80-85%
Tuesday	14-25 F	37-44 F	<10%
Wednesday	23-33 F	48-58 F	35-50%
Thursday	32-41 F	46-55 F	25-30%
Normals This Time of Year	40-46 F	64-66 F	25%-30%

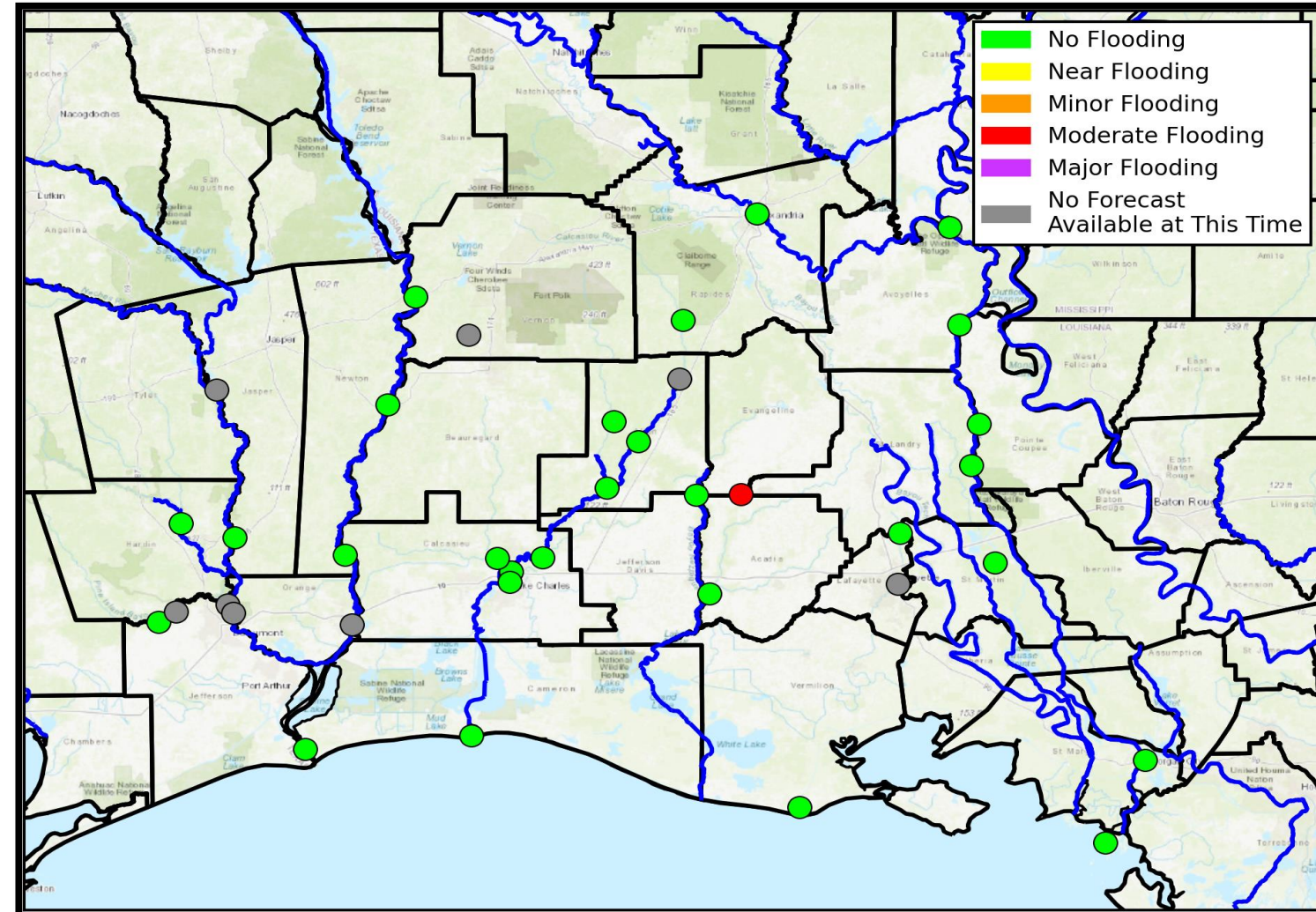
A slow moving cold front has resulted in moderate rainfall in portions of Lower Acadiana in the last 24 hours.

Some water atop roadways was reported in Evangeline Parish this morning.



No rivers are *currently* in flood.

Due to recent rainfall, Bayou Des Cannes near Eunice is currently at a stage near 14 feet, and *forecast* to rise to a crest near 18 feet (moderate flood stage) by Friday afternoon. It is forecast to fall below flood stage by Saturday evening.



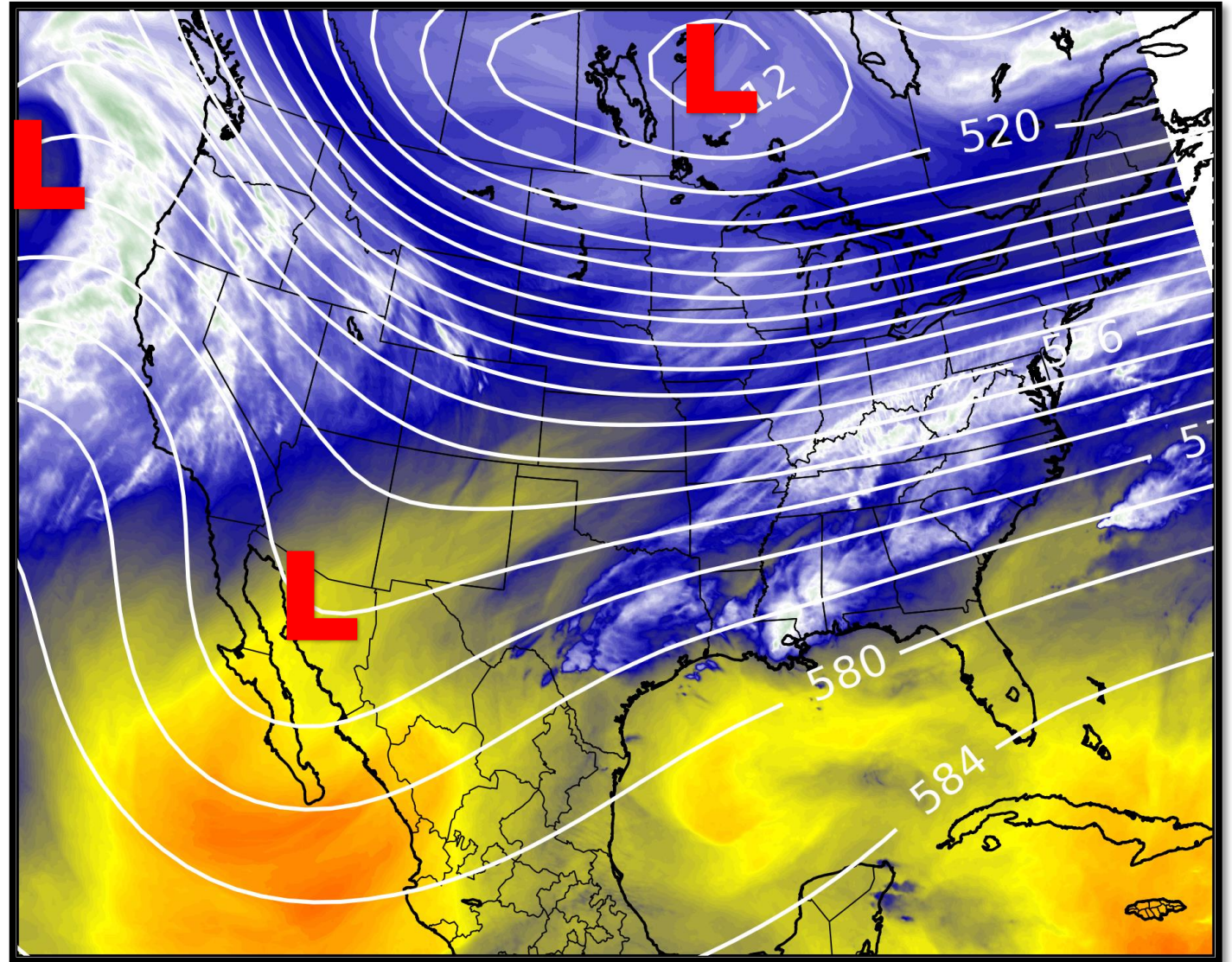
Upper Level Steering Patterns



Lake Charles
WEATHER FORECAST OFFICE

A Strong upper level low pressure is centered over south-central Canada.

An additional upper low is noted approaching the Pacific Northwest, as well as one in the Desert Southwest.



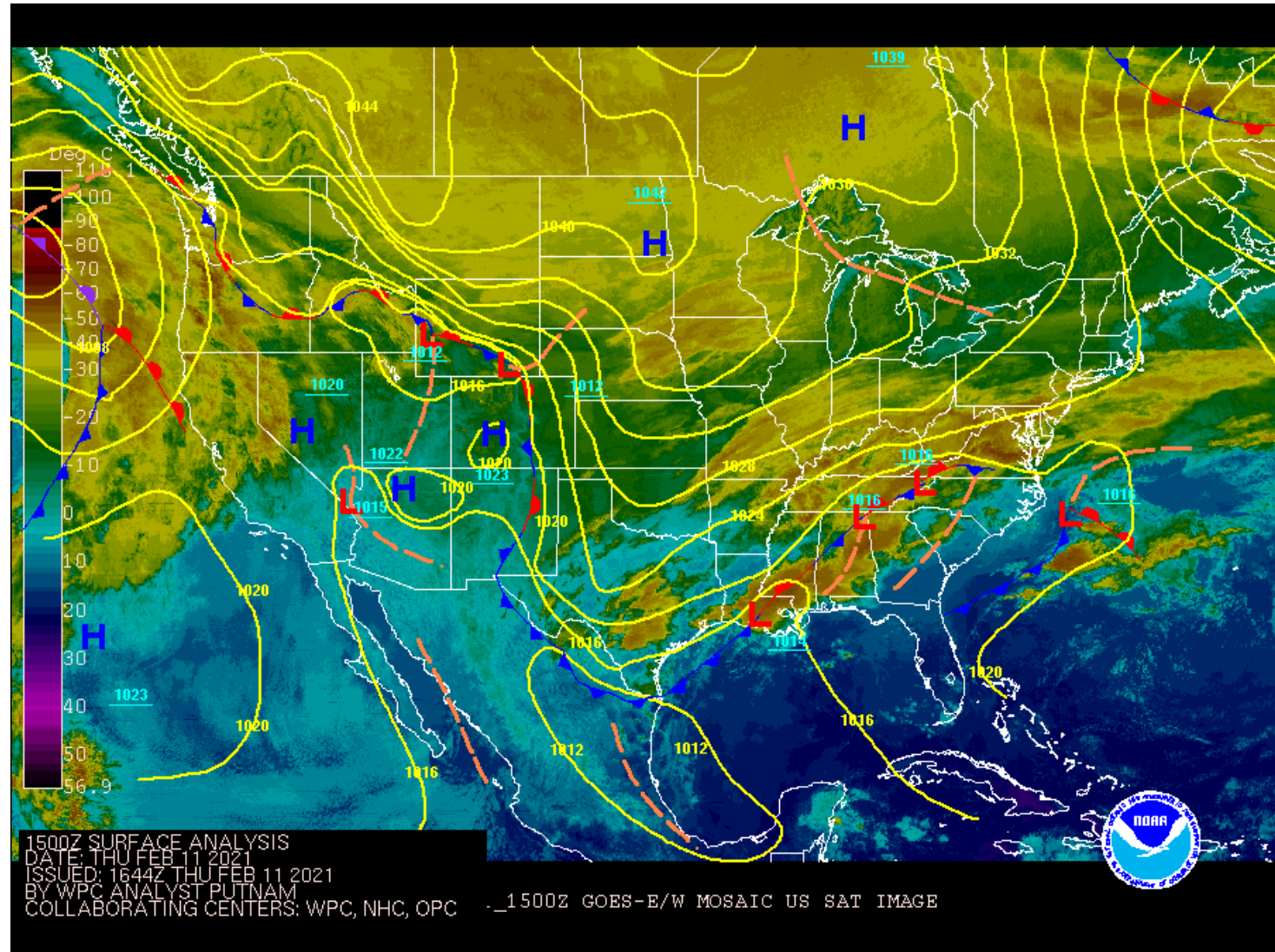
Surface Weather Map with Fronts



Lake Charles
WEATHER FORECAST OFFICE

A slow moving cold front is currently working through SE Louisiana.

Strong surface high pressure will continue to build southward into the Plains, resulting in cold Arctic air spilling southward with it.



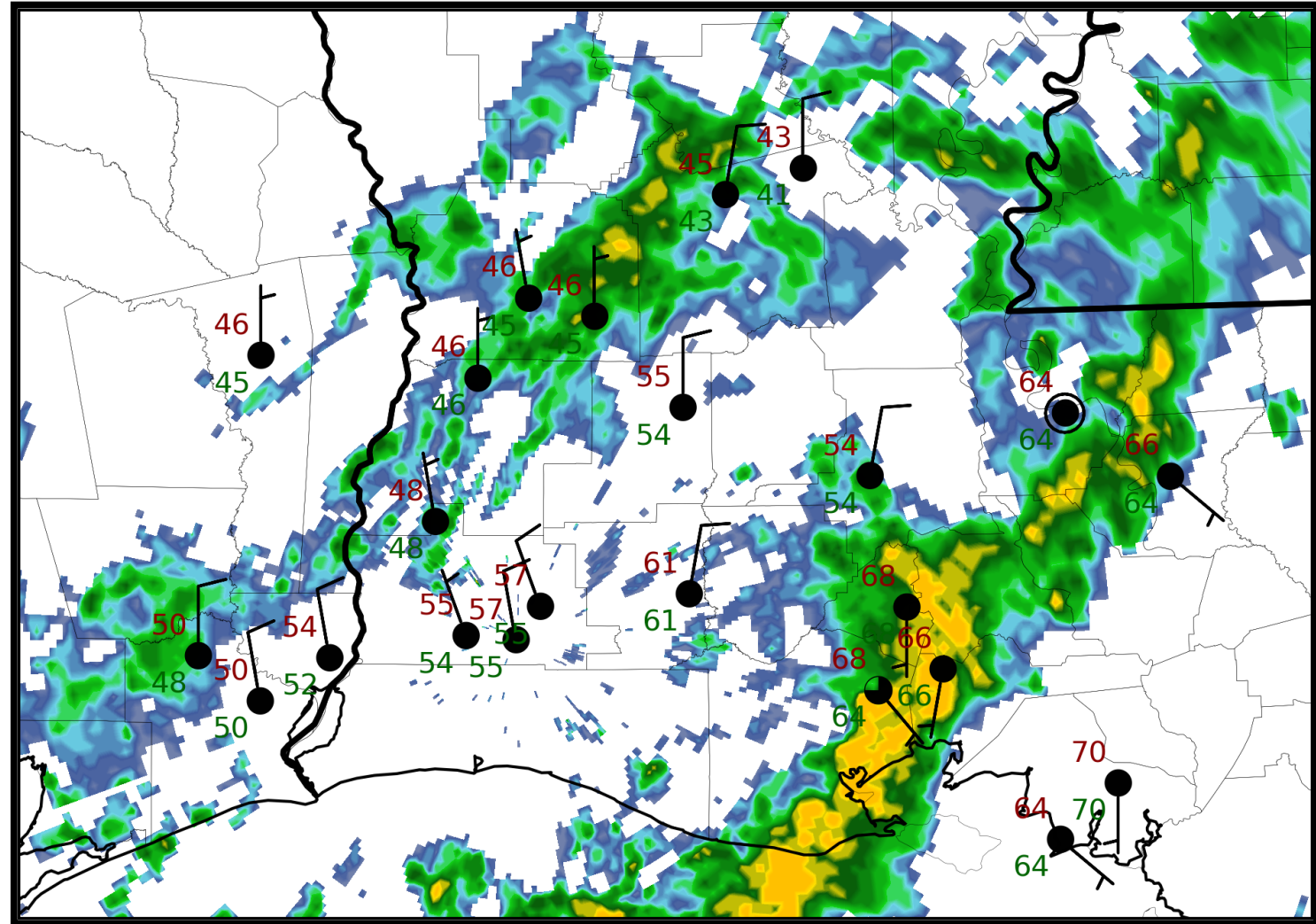
6 am Weather Observations



Lake Charles
WEATHER FORECAST OFFICE

A slow moving cold frontal boundary has resulted in moderate showers and thunderstorms this morning.

Warmer air and southerly winds are noted ahead of the front, with northerly winds and colder air behind the front.



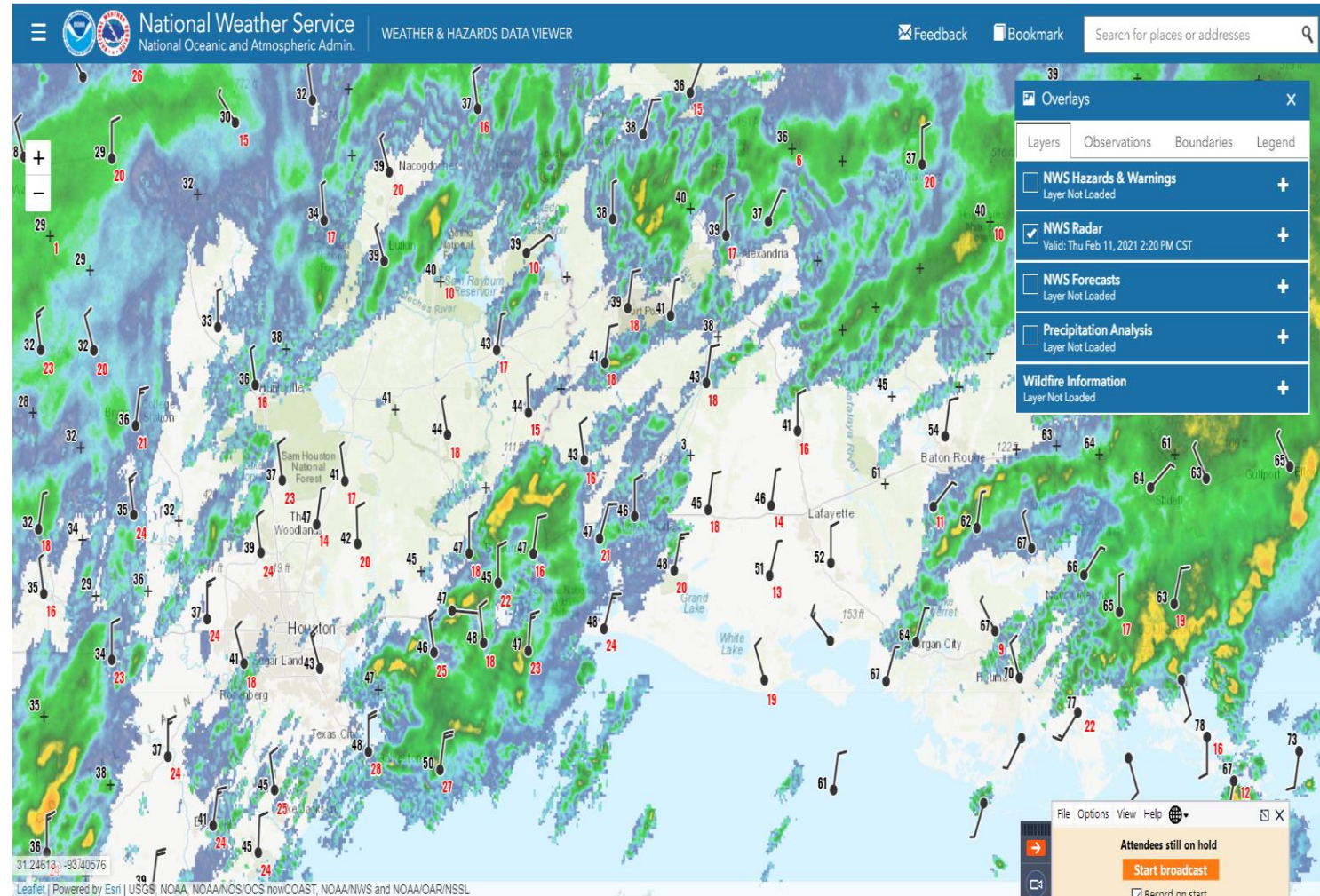
2 pm Weather Observations



Lake Charles
WEATHER FORECAST OFFICE

Colder air has continued to filter into the region this afternoon.

Some areas of scattered showers remain.





There is a large amount of uncertainty in the temperature forecast following the front, but *much* colder temperatures are expected to some extent.

How much cold air can encroach upon the area and interact with moisture will result in exactly what type of precipitation falls. A mix of rain, freezing rain, sleet, and/or snow will all be possible at times.

GFS Forecast Temperature Anomaly



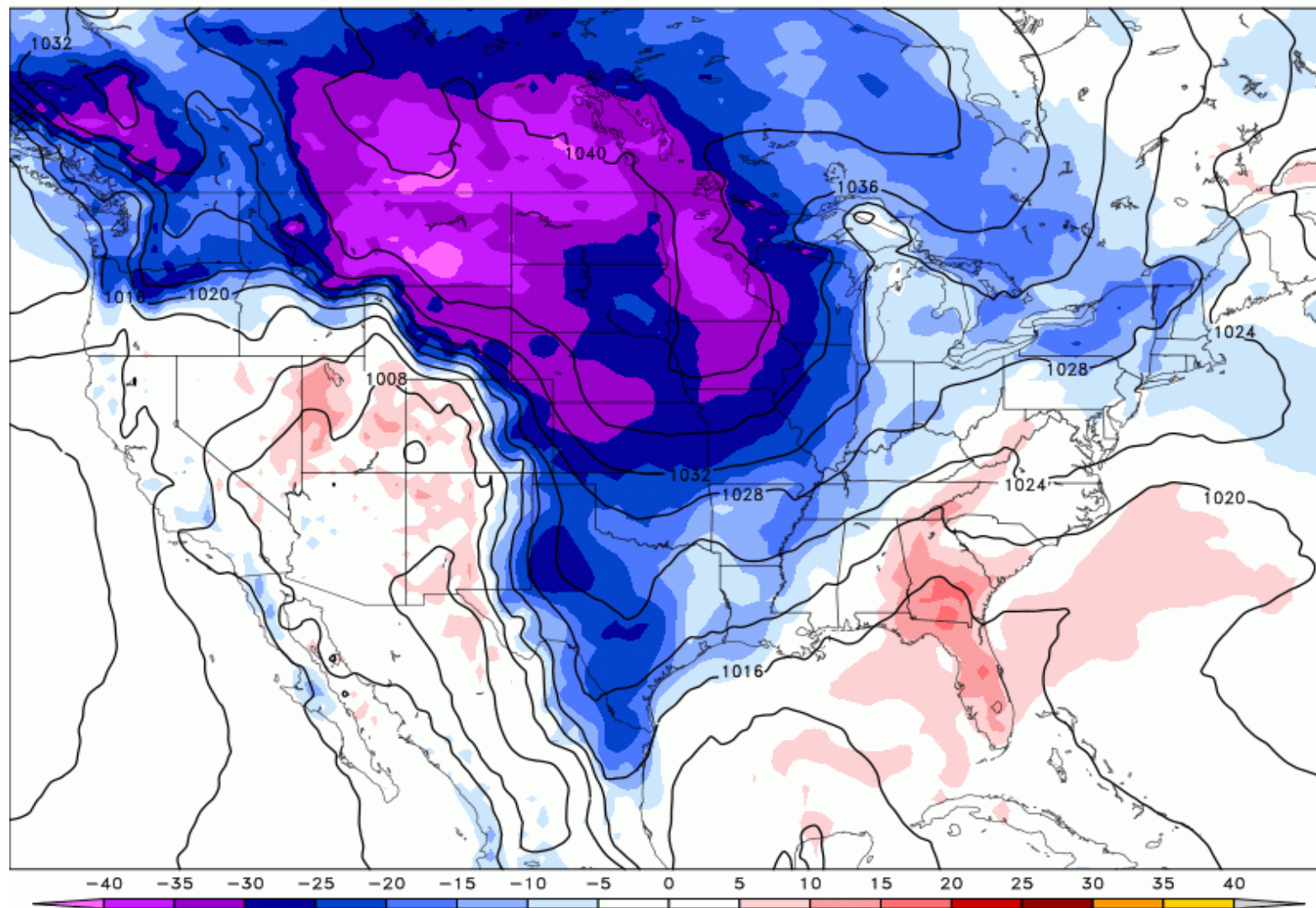
Lake Charles
WEATHER FORECAST OFFICE

2m Temp 1981–2010 Anomaly (°F) | College of DuPage NEXLAB

12Z GFS | F036 Valid: 00Z SAT FEB 13 2021

The intrusion of Arctic air will result in temperatures falling well below normal.

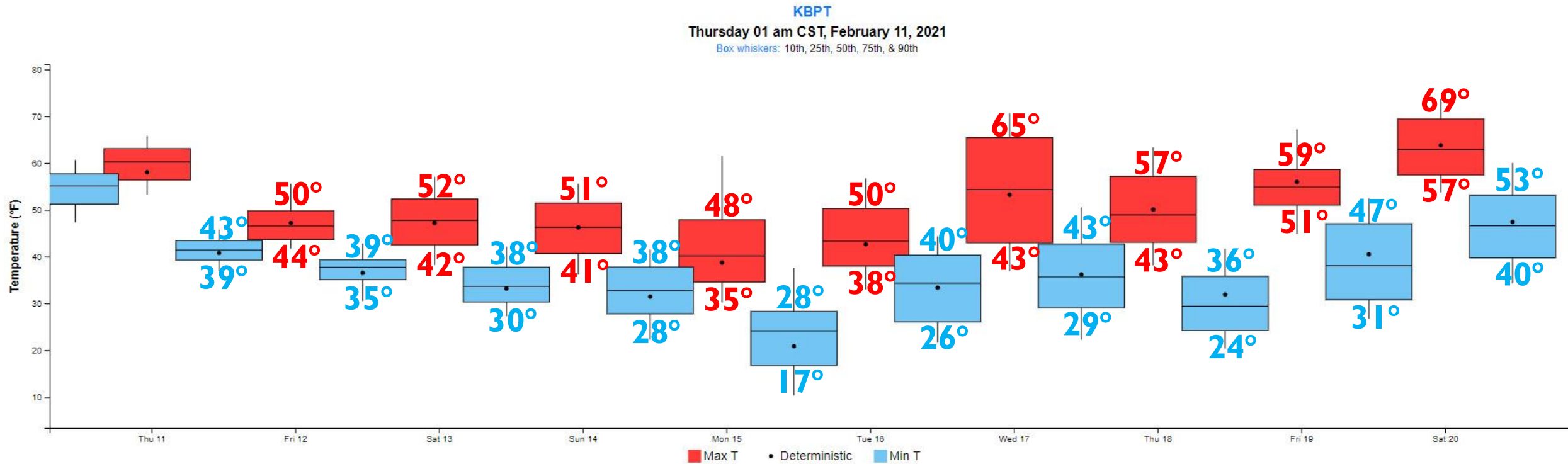
Below normal temperatures are expected to linger well into next week.



Beaumont, TX Temperature Forecast



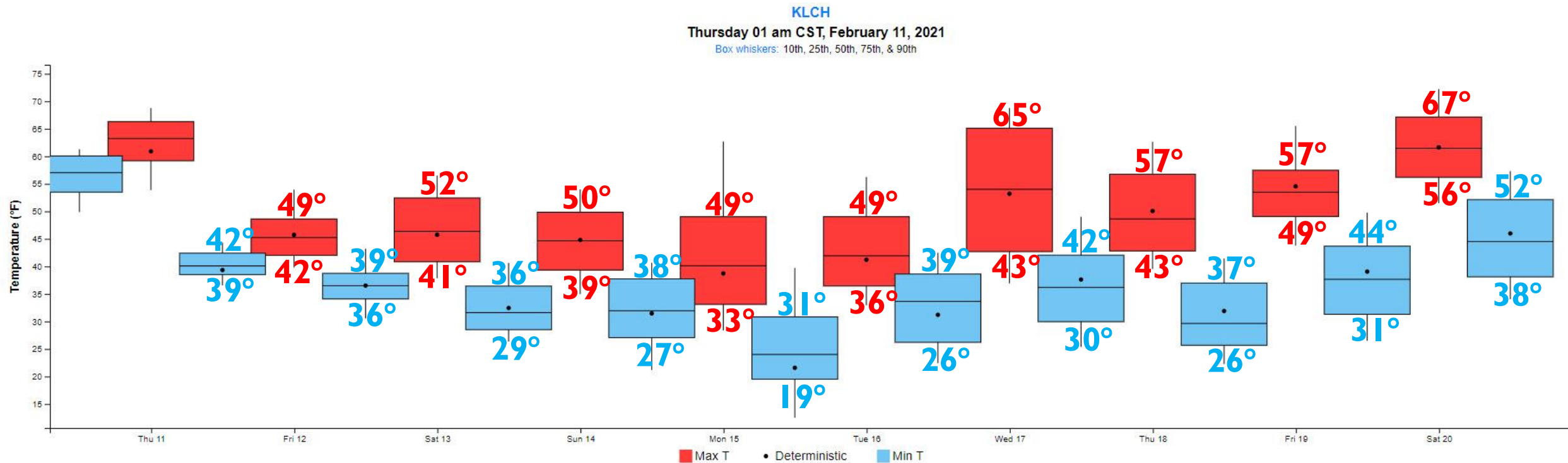
Lake Charles
WEATHER FORECAST OFFICE



Lake Charles, LA Temperature Forecast



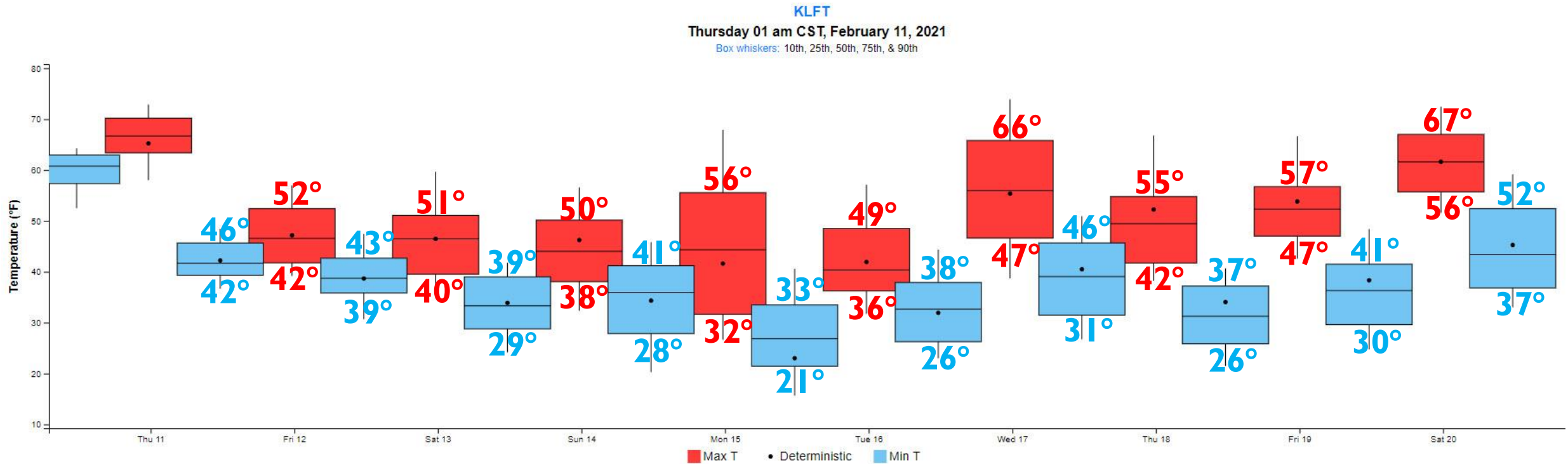
Lake Charles
WEATHER FORECAST OFFICE



Lafayette, LA Temperature Forecast



Lake Charles
WEATHER FORECAST OFFICE

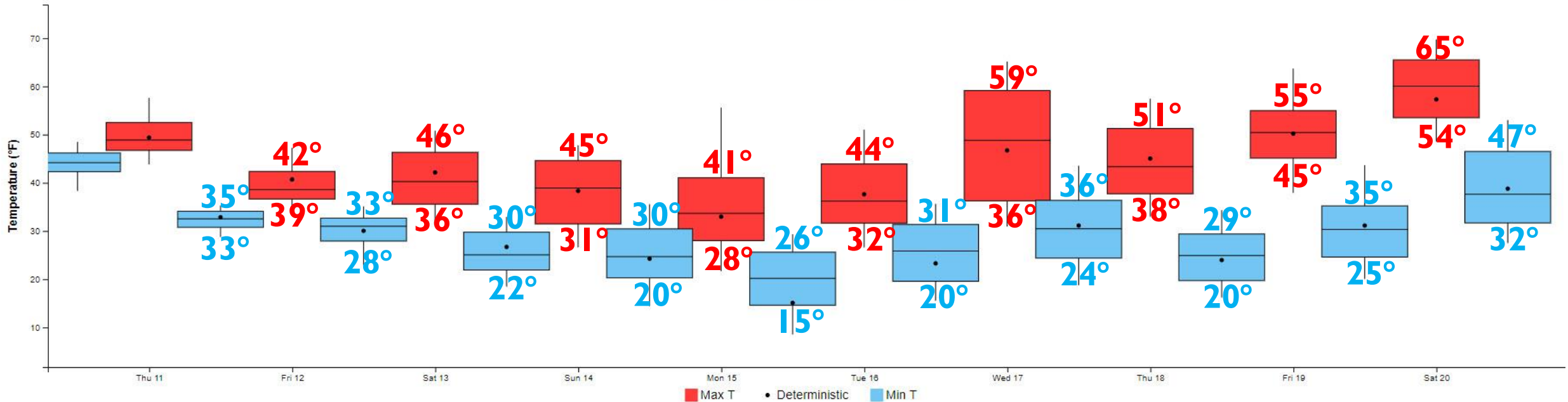


Alexandria, LA Temperature Forecast



Lake Charles
WEATHER FORECAST OFFICE

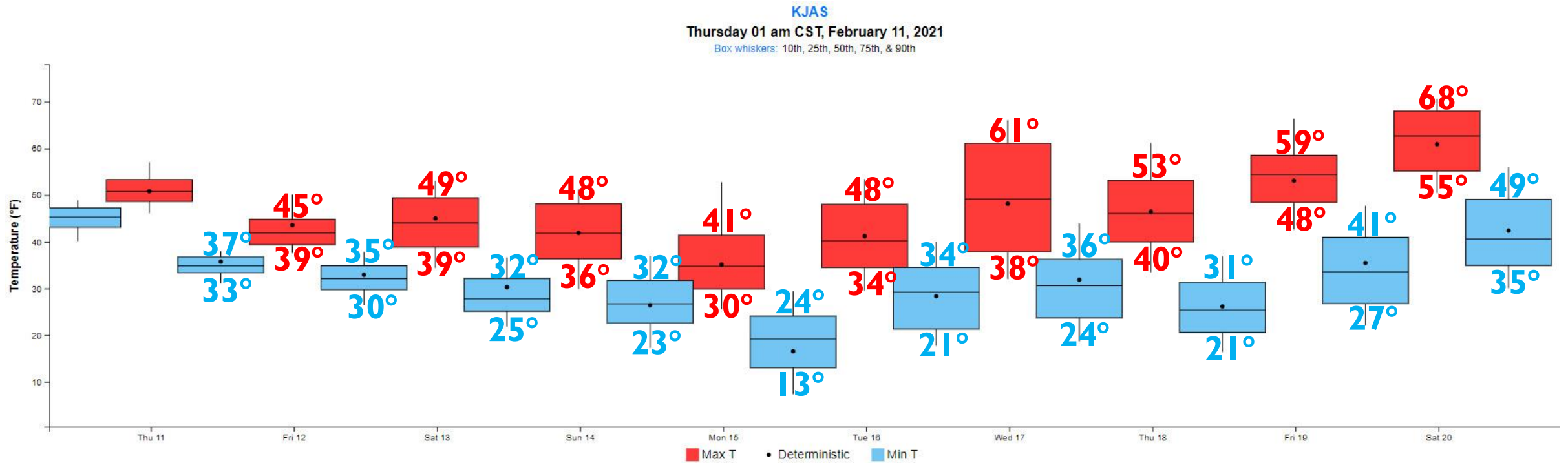
KAEX
Thursday 01 am CST, February 11, 2021
Box whiskers: 10th, 25th, 50th, 75th, & 90th



Jasper, TX Temperature Forecast



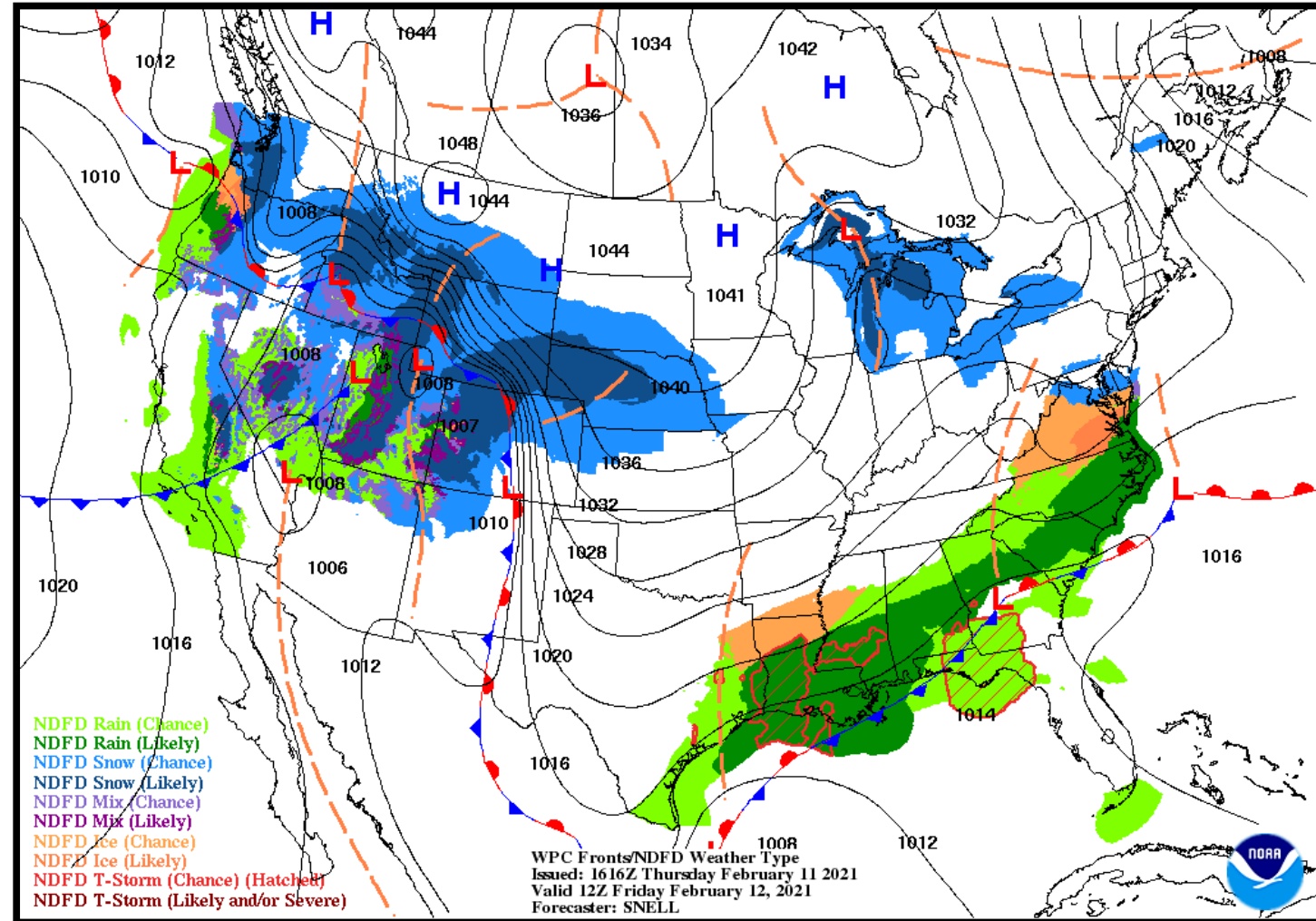
Lake Charles
WEATHER FORECAST OFFICE





NWS LCH REGIONAL WEATHER

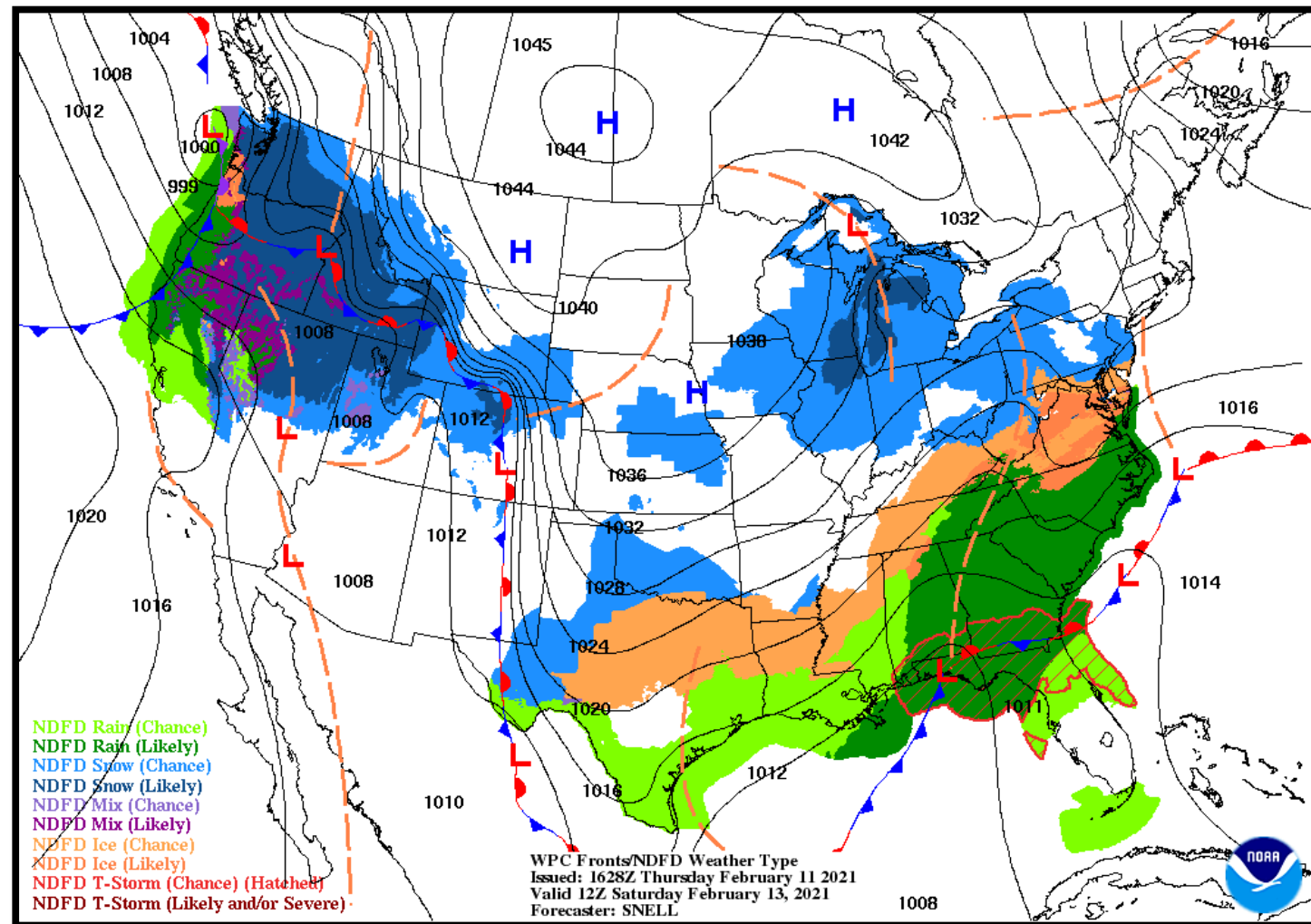
Low Temperature	33-43 F
High Temperature	40-49 F
Wind	NNE 10-15 mph
Rain Chances	65-80%
Weather Hazards	None





NWS LCH REGIONAL WEATHER

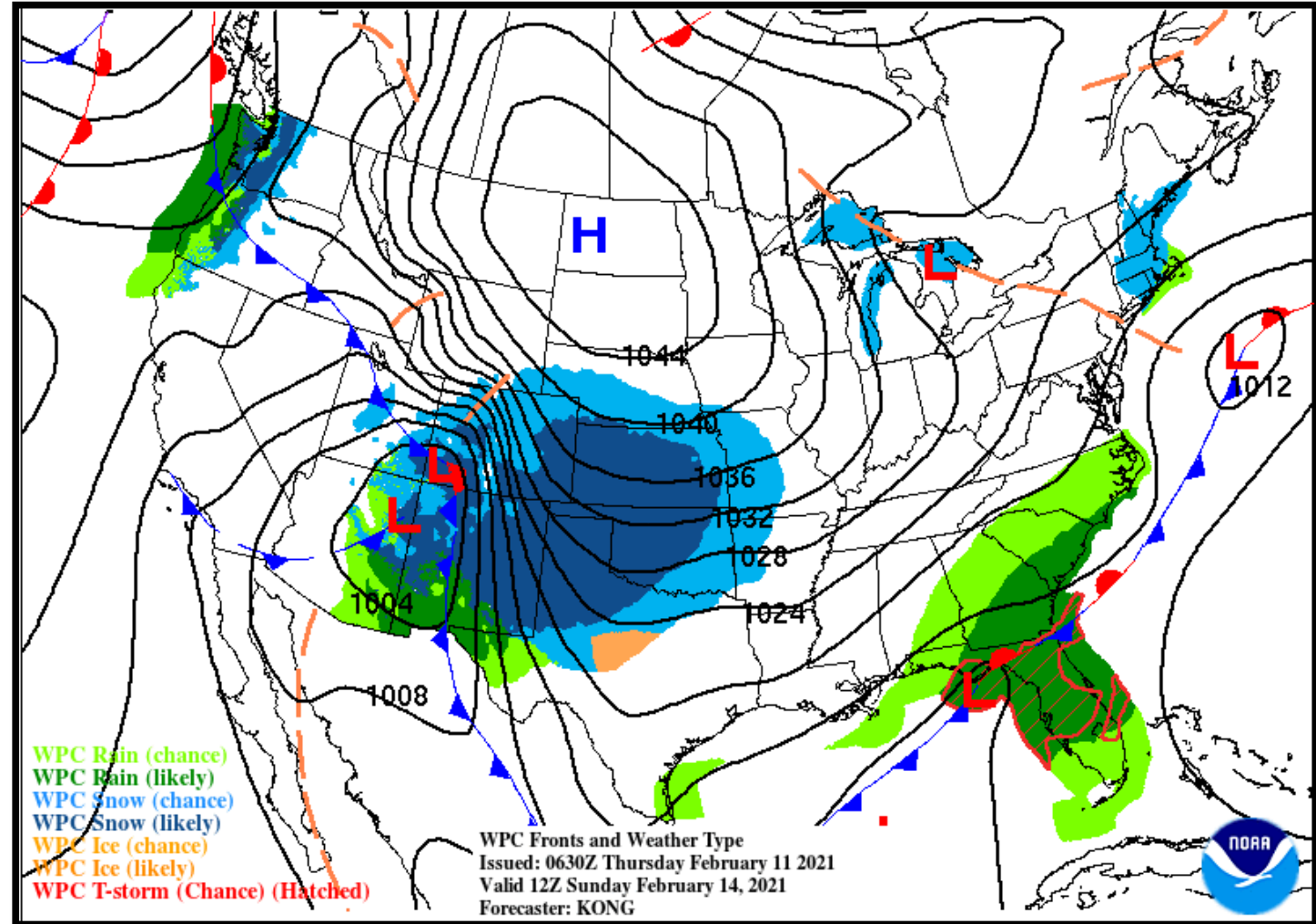
Low Temperature	31-41 F
High Temperature	42-50 F
Wind	N 10-15 mph
Rain Chances	20-25%
Weather Hazards	Mix of Rain / Freezing Rain





NWS LCH REGIONAL WEATHER

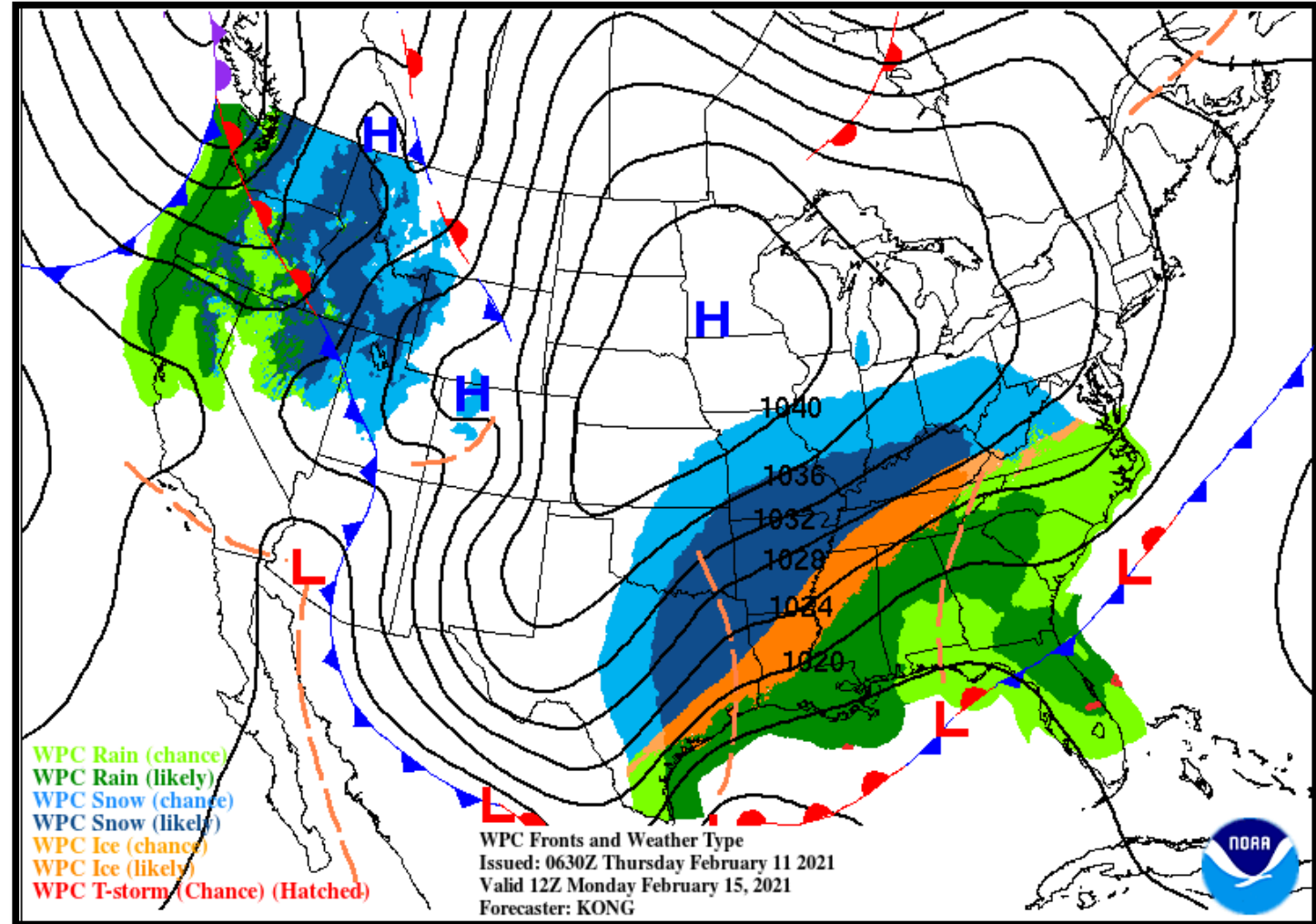
Low Temperature	26-34 F
High Temperature	38-49 F
Wind	NNE 10-15 mph
Rain Chances	10%
Weather Hazards	Cold





NWS LCH REGIONAL WEATHER

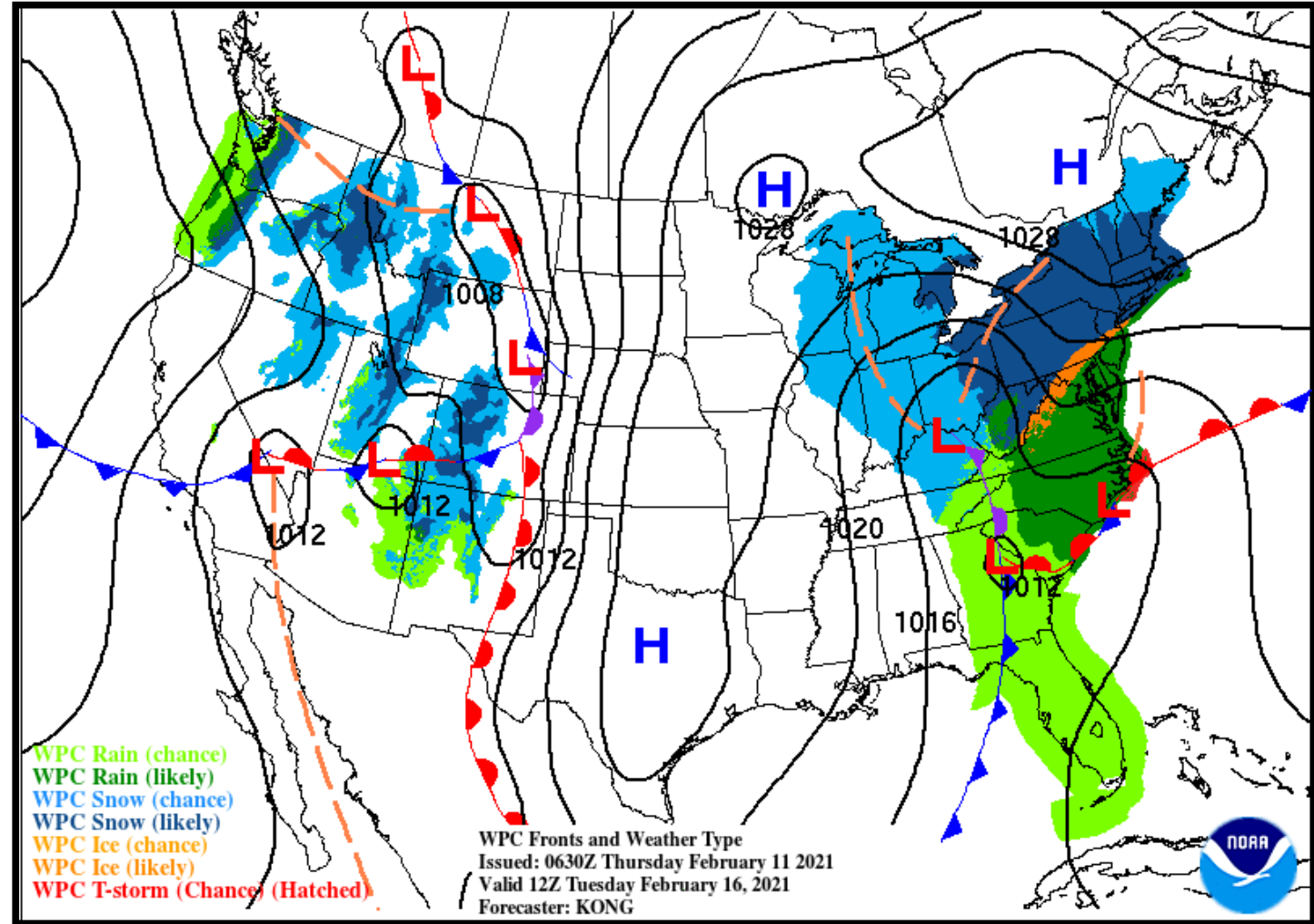
Low Temperature	22-35 F
High Temperature	31-44 F
Wind	N 10-15 mph
Rain Chances	80-85%
Weather Hazards	Rain / Freezing Rain / Sleet / Snow Mix - Cold





NWS LCH REGIONAL WEATHER

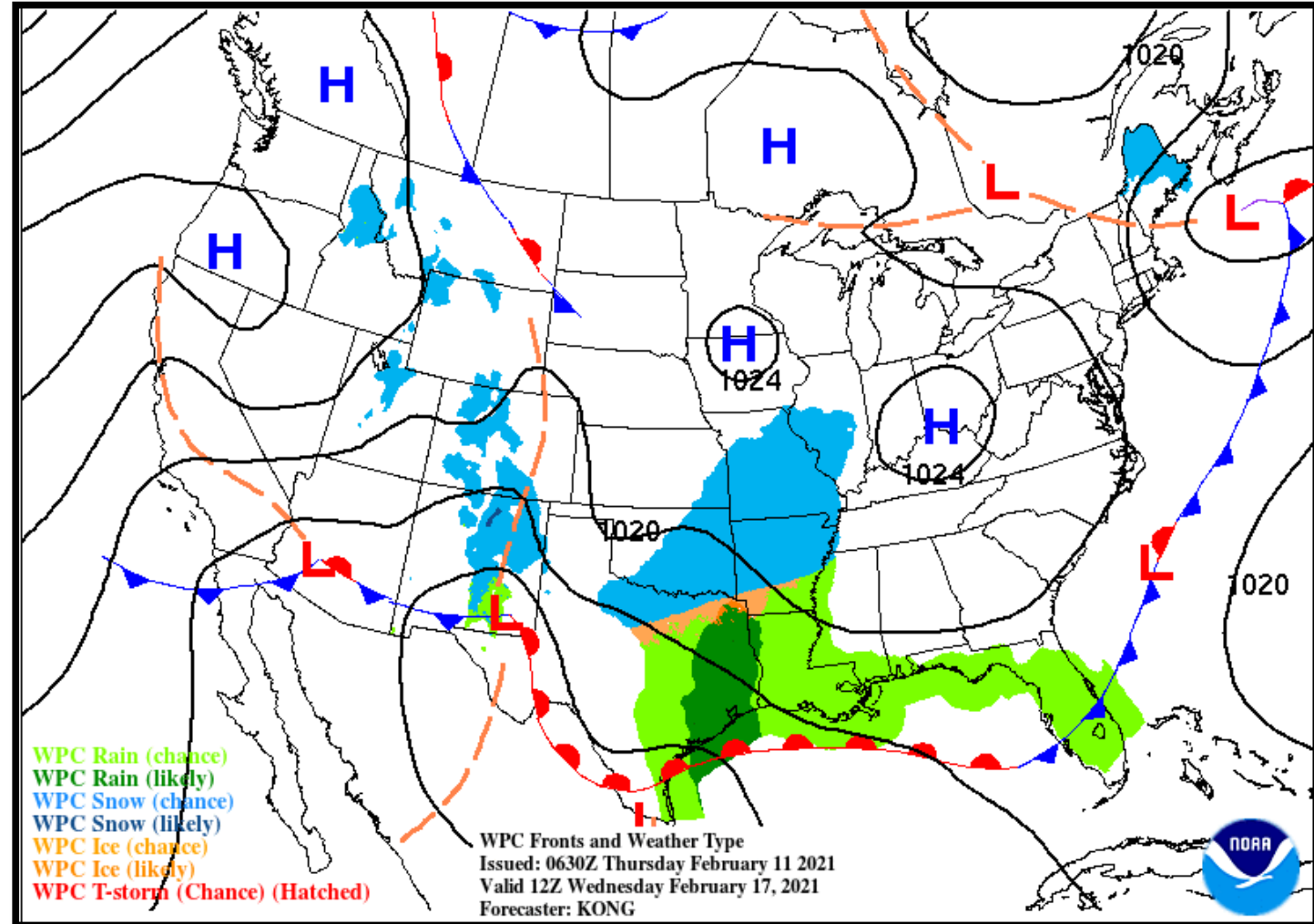
Low Temperature	14-25 F
High Temperature	37-44 F
Wind	N 5 mph
Rain Chances	<10%
Weather Hazards	Very Cold





NWS LCH REGIONAL WEATHER

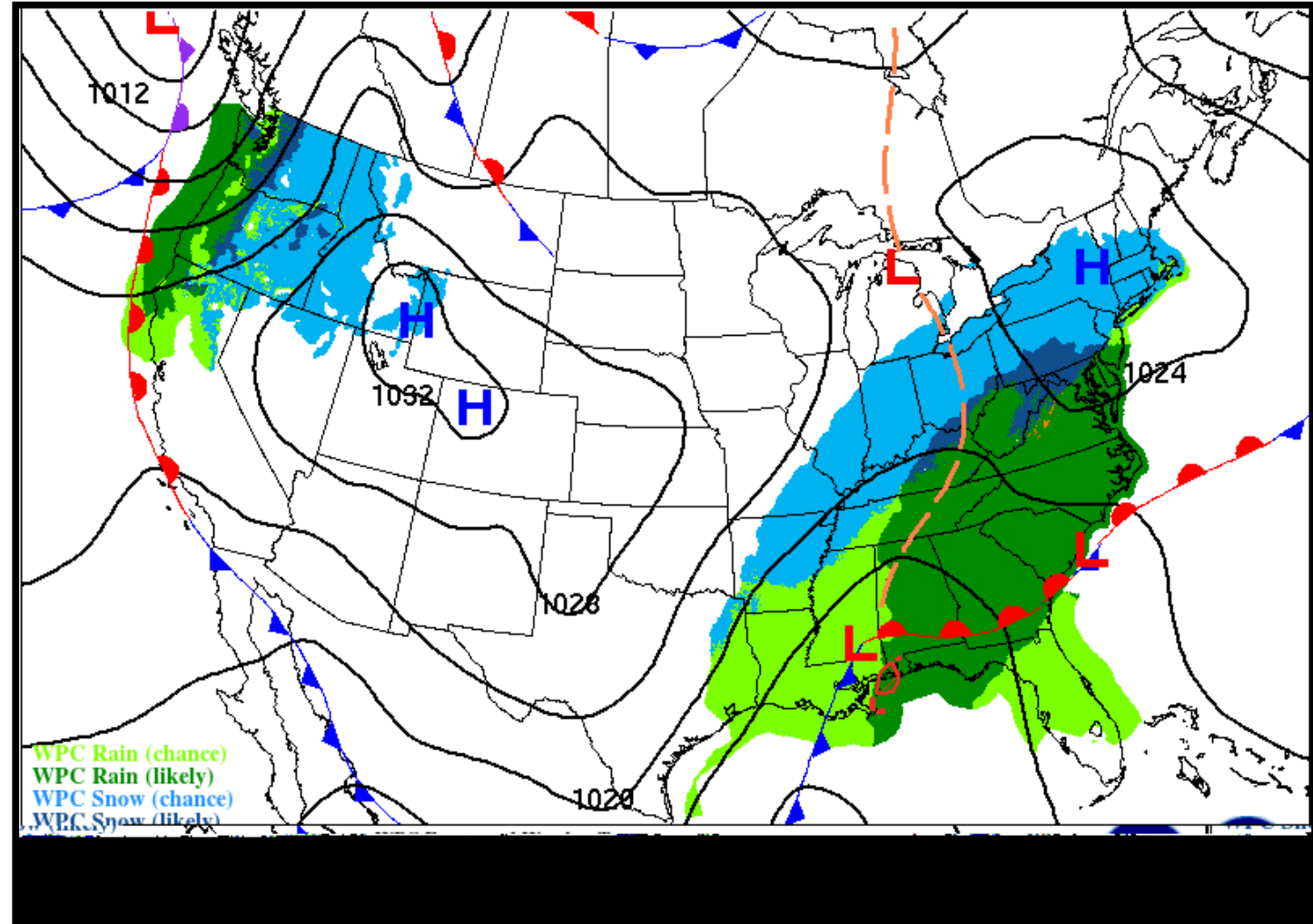
Low Temperature	23-33 F
High Temperature	48-58 F
Wind	E 5-10 mph
Rain Chances	35-50%
Weather Hazards	Cold





NWS LCH REGIONAL WEATHER

Low Temperature	32-41 F
High Temperature	46-55 F
Wind	NNW 10 mph
Rain Chances	25-30%
Weather Hazards	None



Weekly Weather Summary Table



Lake Charles
WEATHER FORECAST OFFICE

Color Codes Except for Temperatures

Yellow = Low Threat

Orange = Moderate Threat

Red = High Threat

Color Codes For Temperatures

Yellow=5 F above normal

Orange=10 F above normal

Red=15 F above normal

Vry Lt Blue=5 F below normal

Lt Blue=10 F below normal

Blue=15 F below normal

Weather	Friday 02/12/21	Saturday 02/13/21	Sunday 02/14/21	Monday 02/15/21	Tuesday 02/16/21	Wednesday 02/17/21	Thursday 02/18/21
Rain Total	0.50-1.0"	0.10-0.25"	None	0.50-1.0"	None	0.50-1.50"	None
T-Storm/Lightning	None	None	None	None	None	None	None
Tornado/Hail/Dmg Wind	None	None	None	None	None	None	None
Wind	NNE 10-15 mph	N 10-15 mph	NNE 10-15 mph	N 10-15 mph	N 5 mph	E 5-10 mph	NNW 10 mph
Tides	Below Normal	Below Normal	Below Normal	Near Normal	Near Normal	Near Normal	Near Normal
Wave Height	Near: 1-4 ft Off: 5-6 ft	Near: 1-4 ft Off: 4-5 ft	Near: 1-3 ft Off: 4-5 ft	Near: 1-5 ft Off: 4-8 ft	Near: 1-3 ft Off: 4-5 ft	Near: 1-5 ft Off: 6-7 ft	Near: 2-5 ft Off: 6-9 ft
Temperature	Low: 33-43 F High: 40-49 F	Low: 31-41 F High: 42-50 F	Low: 26-34 F High: 38-49 F	Low: 22-35 F High: 31-44 F	Low: 14-25 F High: 37-44 F	Low: 23-33 F High: 48-58 F	Low: 32-41 F High: 46-55 F

Normal Low: 40-46 F Normal High: 64-66 F



- **Cold to *very* cold air expected late this weekend through mid next week.**
- **Some frozen precipitation possible this weekend, but more likely Monday into early Tuesday.**
- **A good deal of uncertainty at this time, but a high impact winter weather event is possible Monday**

